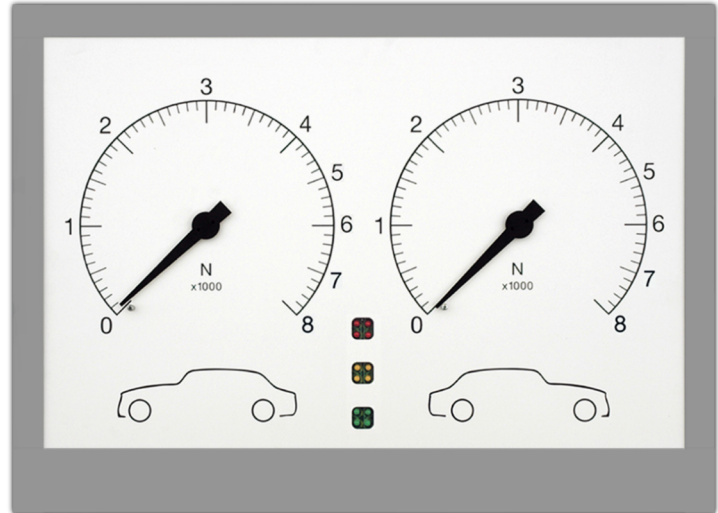


P40-NT Plate brake tester

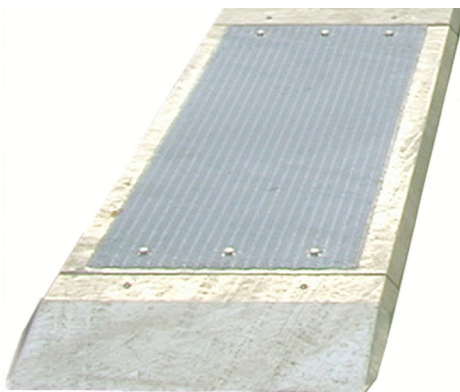


P40 Analogue Display

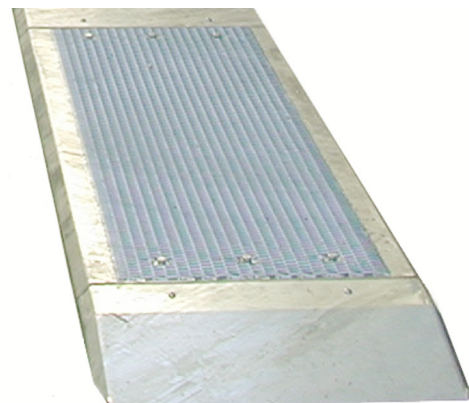
- Brake force indication left / right up to 8 kN
- Lamp indication for brake force difference left / right:
GREEN - YELLOW - RED
- Microprocessor controlled
- Wall bracket included



Two Plate Brake Tester



Hot dip zinc



Specifications

- Measuring range: 8000 N
- Axle weight: 2 ton (measuring)
- Axle weight: 3 ton (drive over)
- Dimensions plate: 1480 x 620 x 50 mm (L x W x H)
- Dimensions display: 635 x 465 x 165 mm (L x W x H)
- Power supply: 1 phase 230 V / 50 Hz

Optional



Pedal force meter

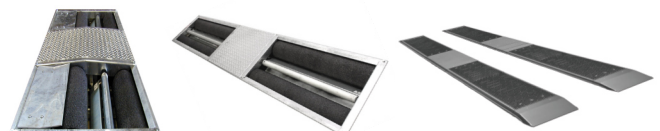
Technical specifications are subject to changes without notice.

altesco

Altus-Escon-Company B.V.
Drachmeweg 26
NL-2153PA Nieuw-Vennep
The Netherlands

Certified: ISO 9001
www.altus-escon.com
sales@altus-escon.com
+31 (0)88 258 37 00

Diagnostic equipment for specialists!



Altesco P40 EN 20220201