

# ESCON TRUCK PLAY DETECTOR PD5700

VOSA/DVSA approved. Suitable to test HGV & PSV



The ESCON PD5700 Hydraulic Play Detector is designed to check quickly and efficiently most steering and suspension components. The PD5700 is designed for the UK statutory testing of HGV & PSV vehicles in accordance with the MOT test. **Approval EINAP16216-1210062.**

The ESCON PD5700 is an electronic hydraulic play detector for heavy vehicles. It is designed to check quickly and efficiently most steering and suspension components. It lets a technician quickly detect play and wear in the wheel guiding and steering parts. The PD5700 consists of a control unit with hydraulic power unit and control lamp and two moving platforms, each with a hot dip zinc chequered plate. A set of floor frames is optional but recommended.



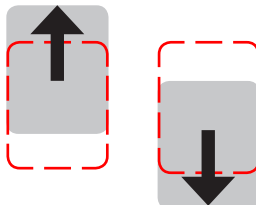
## Functions control lamp / movements platforms

Pressing a key on the control lamp causes a movement in the indicated direction.

LEFT/RIGHT  
movement



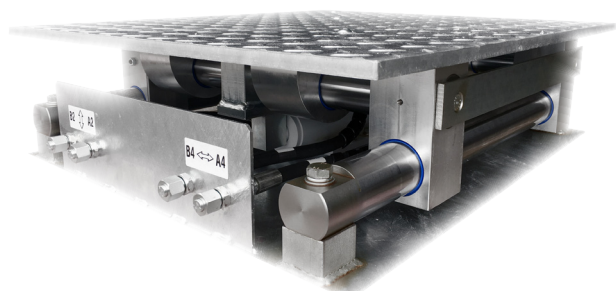
FRONT/REAR  
movement



The platforms move in opposite directions. When one platform moves to the front, the other moves to the rear. When one platform moves to the left, the other moves to the right. The platform returns to the neutral position when the button is released.

## Specifications

- Operation: *Electro-hydraulic*
- Maximum axle load/wheel load: *20 ton / 10 ton (drive over)*
- Maximum test weight/wheel: *8 ton*
- Maximum working pressure: *215 bar*
- Longitudinal/transversal movement: *100 mm*
- Test speed: *40 mm/sec*
- Cable length: *6,5 m*
- Dimensions Platforms: *950 x 800 x 217 mm (L x W x H)*
- Dimensions hydraulic unit: *360 x 300 x 875 mm (L x W x H)*
- Motor: *3 kW, 3PH+N+E 400V / 50Hz*



Also available with a wireless RF control lamp (model PD5705).



PD5705 lamp (RF)

Technical specifications are subject to changes without notice.

Escon PD5700 GB 20180401

**ALTESCO**, Altus-Escon-Company BV, Drachmeweg 26, NL-2153PA Nieuw Vennep, Netherlands.  
Phone: +31 (0)88 ALTESCO, +31 (0)88 2583700, Fax: +31 (0)88 2583790, [www.escon-test.com](http://www.escon-test.com), [info@escon-test.com](mailto:info@escon-test.com)

# ESCON