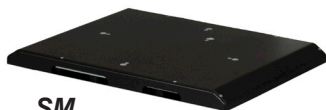


# ESCON HYDRAULIC PLAY DETECTOR PD2600 SERIES



The ESCON PD2600 Hydraulic Play Detector Series is designed to check quickly and efficiently most steering and suspension components. It enables a technician quickly to detect play and wear in the wheel guiding and steering parts of passenger cars and light trucks. A used car often shows wear and tear in ball joints, bushings, fixations, pivot points, link bolts and shock absorber mountings. Most worn or damaged components can be identified before they pose problems.

The PD2600 model consists of a hydraulic power unit, a control lamp (cable connected or wireless (RF)) a brake aid and two platforms, one for the left wheel and one for the right wheel. **The platform height is only 60 mm.** The surface mount model **SM** can be mounted on the floor or on a suitable lift with runways, e.g. a 4-post lift. The flush mount model **FM** can be installed on both sides of an inspection pit or can be integrated in a suitable 4-post lift.



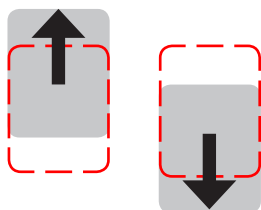
SM

Each platform is actuated by two hydraulic cylinders. Four models are available in both a SM and FM version; the **PD2610**, **PD2615**, **PD2620** and **PD2630**. The model number determines the possible movements of the platforms as well as the type of control lamp supplied. Floor frames for the FM models are optional but recommended.

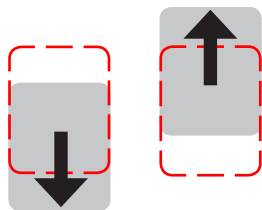
The play in the components is visually checked with the control lamp. Pressing a key on the control lamp causes a movement in the indicated direction. The platform stops when the button is released.

## Movements platforms PD2610 & PD2615

**FRONT/REAR movement**



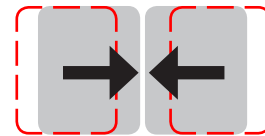
**REAR/FRONT movement**



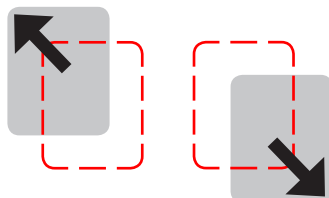
**LEFT/RIGHT movement**



**RIGHT/LEFT movement**



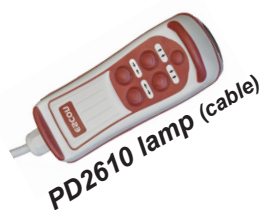
**DIAGONAL movement**



A diagonal movement is performed when a Front or Rear key is pressed simultaneously with a Left or Right key.



PD2615-PD2630 lamp (RF)



PD2610 lamp (cable)



Brake aid

## Movements platforms PD2620 & PD2630

- All movements PD2610 & PD2615 +
- Anti-fase movements
- Automatic mode
- Independent movement left/right platform



FM



PD2620 lamp (cable)



## Specifications

- Operation: *Electro-hydraulic*
- Maximum axle load/wheel load: *3 ton / 1,5 ton*
- Maximum working pressure: *175 bar*
- Longitudinal/transversal force: *8 kN*
- Longitudinal/transversal movement: *50 mm*

- Movement speed: *60 mm/sec*
- Cable length: *6,5 m (PD2610, PD2620)*
- Dimensions platform SM: *740 x 580 x 60 mm (L x W x H)*
- Dimensions platform FM: *690 x 700 x 60 mm (L x W x H)*
- Motor: *1,5 kW, 3PH+N+E 400V / 50Hz / 16A slow*

Technical specifications are subject to changes without notice.

Escon PD2600 GB 20140601

**ALTESCO**, Altus-Escon-Company BV, Drachmeweg 26, NL-2153PA Nieuw Vennep, Netherlands.  
Phone: +31 (0)88 ALTESCO, +31 (0)88 2583700, Fax: +31 (0)88 2583790, www.escon-test.com, info@escon-test.com

# ESCON